

# User Manual

# plugiator

DSP Plug-In based Sound Synthesizer

User Manual Version V1.0

January 2008

use|audio

## License and Disclaimer

Installation and/or any use of the Product will constitute acceptance of all terms and conditions contained herein. The software, firmware, sound data and related documentation included with this Product is provided to you on a license basis. The Plug-in Manager software requires your separate acceptance of its respective software license, for which you will be prompted during installation of the software.

You are prohibited to modify, disassemble, reverse engineer or distribute any software, firmware or documentation provided with this Product. We must caution you that this documentation may include technical inaccuracies or typographical errors. We can not warrant that the supplied software will be compatible with any specific computer or configuration.

This Product requires the previous installation of Adobe Flash Version 9.0 or later.

The Product is provided for your reasonable enjoyment only and Use Audio Inc offers no warranty for any particular fitness of the Product. Use Audio Inc warrants that the Product performs in material conformance with published specifications in supported configurations. For hardware warranty terms, please refer to the last pages of this user manual.

In no event will Use Audio Inc be liable for any loss of data or for errors in data use or processing resulting from the use of this Product or the documentation. In particular, Use Audio Inc will not be responsible for any direct or indirect damages (including lost profits, lost savings, delays or interruptions in the flow of business activities, including but not limited to, special, incidental, consequential, or other similar damages) arising out of the use of or inability to use this Product or the associated documentation.

The use of registered names, trademarks, etc., in this publication does not imply, even in the absence of a specific statement, that such names are exempt from the relevant protective laws and regulations (patent laws, trademark laws etc.) and therefore free for general use. Permitted use of 3<sup>rd</sup> party trademarks does not mean that Use Audio Inc is affiliated with the respective trademark holder in any way. In no case does Use Audio Inc guarantee that the information given in this documentation is free of such third-party rights.



This Product is in compliance with applicable CE, FCC Part 15 Class B and RoHS requirements as of December 2007. Copyright © 2007-2008 Use Audio Inc. All rights reserved.

# Table of Contents

License and Disclaimer .....	2
Table of Contents .....	3
Introduction .....	5
What's in the Box .....	6
Important Safety Instructions .....	7
<b>Getting Started .....</b>	<b>9</b>
Making Connections .....	9
Getting Sound out of your Plugiator .....	10
Plugiator Control Interface .....	11
Multi Function Knobs .....	11
Single Function Knobs .....	13
Quick Pads .....	14
<b>Plug-Ins &amp; Presets .....</b>	<b>15</b>
Loading Plug-ins .....	15
Changing Presets .....	16
MIDI Program Change List .....	17
<b>USB Connections and Driver Installation .....</b>	<b>18</b>
Confirming that the Driver has been correctly installed .....	20
<b>Installing the Plug-in Manager Software .....</b>	<b>21</b>
<b>Using the Plug-in Manager Software .....</b>	<b>22</b>
General .....	22
Panel Layout .....	23
Software Menus .....	24
File Menu .....	24
View Menu .....	25
Options Menu .....	26

---

Making Firmware Updates .....	29
Online Menu .....	33
Help Menu .....	33
<b>Using the Plugiator .....</b>	<b>34</b>
Slot Configuration .....	34
Local ON/OFF .....	35
Activity Monitor .....	36
Presets .....	37
Preset File - Context Menu .....	37
Bank - Context Menu .....	38
MIDI Keyboard .....	39
MIDI Monitor .....	40
Tabs .....	41
Preset Manager .....	41
Engaging Presets .....	42
Modifying Presets using the Plugiator Control Interface .....	43
Modifying Presets using the Plug-in Manager Software .....	43
Online Sounds .....	44
<b>Recording &amp; MIDI .....</b>	<b>45</b>
Simultaneously using the Plug-in Manager and a MIDI Sequencing Application for Recording and Playback .....	45
<b>Specifications .....</b>	<b>49</b>
<b>Frequently Asked Questions (FAQ) .....</b>	<b>50</b>
<b>MIDI Implementation Charts .....</b>	<b>52</b>
<b>Hardware Warranty Regulations .....</b>	<b>56</b>
EMI / EMC Compliance .....	57
Origin .....	57
<b>Notes .....</b>	<b>58</b>

# Introduction

Thank you for purchasing the Plugiator, your new plug-in based sound module. A lot of effort and passion went into this product, which we are sure you will appreciate - and we hope you will have as much fun with it as we have.

The Plugiator is a light weight, very portable sound module that can emulate different synthesizer architectures based on its 'Virtual Circuit Modeling' technology without relying on playback of sampled sounds.

It has been designed to model the exact behavior and deliver the same powerful sound as the originals. The Plugiator sounds like the original, and not like a recording of it - and maintains all the depth, the dynamics and the liveliness of the sound. Also allows you to tweak any parameter and easily allows you to design new sounds from ground up, if you like. When you compare its sound experience to sample based solutions, you will quickly notice the difference.

Several aspects of the Plugiator concept are new and unique. Combining the compact size and "compact" price point of sample-based sound modules with the latest in DSP technology, the Plugiator provides innovation and flexibility previously only available in the software plug-in domain.

Its open and modular architecture, combined with unique internet integration for quick browsing of online sounds allows you to capture a whole world of sounds and take it anywhere without dependency on your Computer. Use your computer for management of your sounds - but when it is time to go out, perform and have fun, you can now leave your computer at home if you like.

Great plug-in technology just became light-weight and portable!

# What's in the Box

Please check that your product packaging contains all the following items:

- This User Manual
- Plugiator Sound Synthesizer
- External Power Supply Unit
- USB Cable 1.8m
- Software Installation CD

In case your product has been damaged during transport or the content of the packaging is short of any of the items listed above, please report such issue to your dealer immediately. In case your dealer does not prove to be helpful, please contact Use Audio Inc. directly.

# Important Safety Instructions

**PLEASE CAREFULLY READ THE FOLLOWING:**

## Electrical Safety

- DO NOT USE THIS PRODUCT NEAR WATER.
- CLEAN ONLY WITH A DRY CLOTH.
- DO NOT INSTALL NEAR ANY HEAT SOURCES SUCH AS RADIATORS, HEAT REGISTERS, STOVES, OR OTHER APPARATUS (INCLUDING AMPLIFIERS) THAT PRODUCE HEAT.
- UNPLUG THIS PRODUCT DURING LIGHTNING STORMS OR WHEN UNUSED FOR LONG PERIODS OF TIME.
- POWER CORD: Protect the power cord from being walked on or pinched.
- SERVICING: Refer all servicing to qualified service personnel. Servicing is required when the product has been damaged in any way, such as that the power supply or cord is damaged, liquid has been spilled or objects have fallen onto the product, the product has been exposed to rain or moisture, does not operate normally, or has been dropped.
- DO NOT OPEN THE PRODUCT: Unauthorized opening of the product will void the limited hardware warranty and exposes you to the risk of ELECTRIC SHOCK.
- POWER ON/OFF SWITCH: Note that the power switch on the back of the product DOES NOT break the connection from the mains.
- MULTIPLE-INPUT VOLTAGE: This product may require the use of one of the possibly supplied alternate power plugs. To reduce the risk of fire or electric shock, refer servicing to qualified service personnel or equivalent.
- POWER SUPPLY FAILURE: Never repair a power supply but replace it with a suitable new power supply of identical specifications.

## **Protecting your Ears and Equipment**

**CAUTION:** This product is able to produce sound levels which may damage your ears and/or speakers connected. Please be very conservative on the volumes you are using and always keep your mixer and amplification levels in a range so that loud sounds or spikes produced by the product (intentionally or unintentionally) would not exceed safe levels for your equipment or your ears.

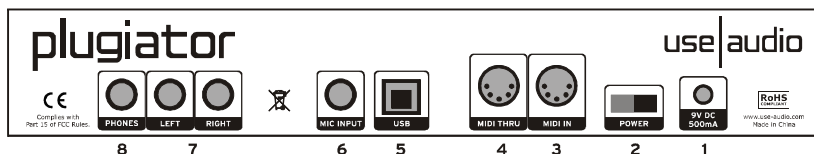
## **Disposal Notice**

Should this product become damaged beyond repair or should you wish to dispose the product, please observe all local, state and federal laws and regulations regarding the disposal of electronic equipment. If your dealer is unable to assist you, you can contact Use Audio Inc. directly and we shall assist you with an environmentally safe disposal.



# Getting Started

## Making Connections



### 1. 9V DC 500mA

Use only the 9V DC power adapter supplied with your Plugiator to power the box. In case the supplied power supply comes with different power plug types, you may need to change the power supply over to the plug type which is suitable in your country.

### 2. Power

Switches your Plugiator on and off.

### 3. MIDI IN

Connect the MIDI OUT of your Keyboard / MIDI triggering source to the MIDI In.

### 4. MIDI THRU

The MIDI input signal is routed directly to the MIDI Thru so you can send the master keyboard's MIDI data to other MIDI sound modules or device as well.

### 5. USB

Connect your Plugiator to your computer's USB port in order to use it with a MIDI sequencer or the Plug-in Manager software.

### 6. Mic

The Plugiator allows you to connect a professional dynamic microphone to your keyboard over a 1/4" phono jack. Please note that some commercial headset microphones use TRS connectors with Tip and Ring internally shorted. The Plugiator is not designed to work with such Microphones.

## 7. Audio Out

The Audio outputs of the Plugiator are two high quality analog unbalanced line level outputs available on ¼" phono jacks as left and right signals.

In order to hear audio from the Plugiator, connect the Audio Out L & R to the Left / Right inputs of a mixing console, a pair of powered speakers, a computer sound card or a HiFi system.

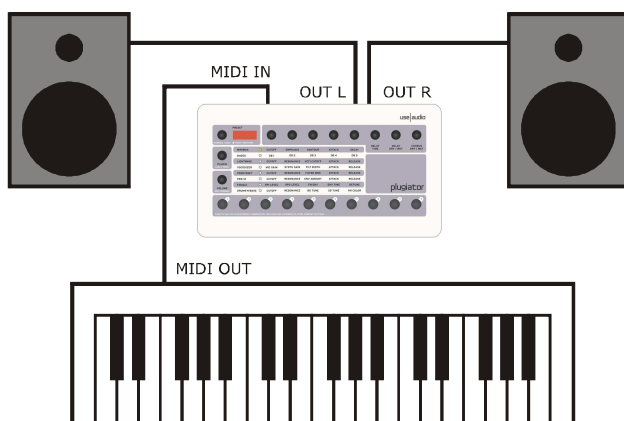
## 8. Headphone

A headphone output is available on a ¼" phono stereo jack for monitoring audio over a pair of stereo headphones.

## Getting Sound out of your Plugiator

This would be a simple setup to quickly rig up your Plugiator with a MIDI keyboard:

1. Connect the MIDI OUT from your keyboard to the MIDI IN of the Plugiator.
2. Connect the line output of the Plugiator to a pair of active speakers (or a mixer); or use the headphone output of the Plugiator.
3. You can now play the Plugiator via your MIDI keyboard sequencer.



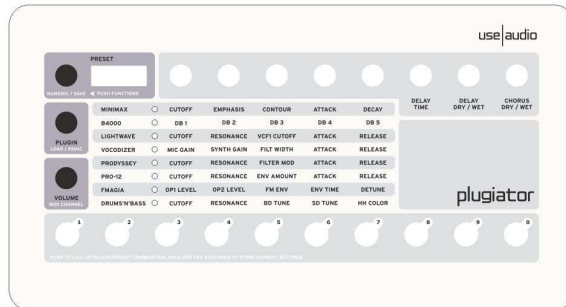
# Plugiator Control Interface

The Plugiator control interface has been designed to allow you quick and easy access to almost every function and setting you would want to tweak while using the product without a computer connected.

With a total of three multi functional knobs, eight single function knobs and ten quick pads you have great amount of control on your sound without the dependency on a computer.

## Multi Function Knobs

The Preset, Plugin and Volume knobs allow you to use a single knob to achieve multiple functions.



### Knob Actions:



1. Rotating the knob.



2. Single push down.



3. Push and hold down for 3 seconds.



4. Push and turn while keeping the knob pushed down

## Preset

The preset knob is used in the following actions:



- a. Rotating to scroll through presets of the currently selected plug-in.



- b. Single push down to enable numerical entry of a two-digit preset number via the quick pads (preset 100 is entered as "00").



- c. Push and hold down for 3 seconds to store & overwrite modified preset parameters into the internal memory of the Plugiator.

## Plugin

The plugin knob is used in the following actions:



- a. Rotating to scroll through the list of plug-ins available on your Plugiator.



- b. Single push down to load the currently selected plug-in.



- c. Push and hold down for 3 seconds to send an "all notes off" MIDI message. That function is useful to shut off a note which got stuck. Stuck notes typically indicate a flaw in the MIDI keyboard, the sequencer or the MIDI interface and are not usually caused by the Plugiator synth itself.

## Volume

The volume knob is used in the following actions:

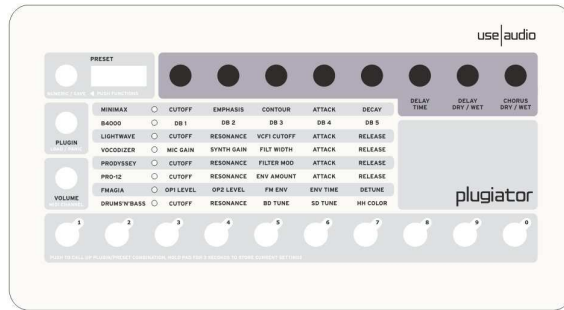


- a. Rotating to increase or decrease the output volume of the Plugiator both on the Line outputs & the headphone out.



- b. Push, hold down and then rotating to change the MIDI channel number [Channel 1 till Channel 16 & OMNI]. The MIDI channel will be set to the currently displayed number when you release the push function of the knob.

## Single Function Knobs



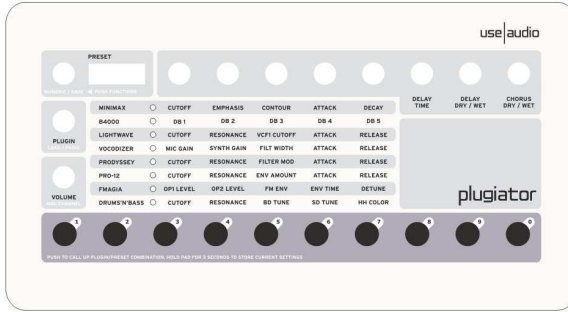
The first five single function knobs are used to control various sound design parameters on each plug-in. These knobs do not have a fixed function & vary depending on the currently loaded plug-in: see the printed label of the Plugiator in the row of the currently active plug-in.



The last three knobs control Delay Time, Delay Effect Dry/Wet, Chorus Flanger Dry/Wet & stay constant throughout all plug-ins.

***Note the one exception to that rule:*** For the B4000 the Chorus Flanger Dry/Wet knob has been assigned to Rotor Speed which is switchable from Slow to Fast.

## Quick Pads



The quick pads on the Plugiator are used in the following actions:

- a. Single push down to engage the previously assigned preset or preset and plug-in combination, corresponding to that quick pad number.
- b. Push and hold down for 3 seconds to assign the currently loaded Plug-in and Preset to the corresponding quick pad number.

**Note:** When making an assignment to a quick pad the Plugiator stores the Plug-in and Preset number that will be recalled when the quick pad is pushed. If you modify a particular preset that was previously assigned to a quick pad, the quick pad would then refer to and call up the modified sound.

# Plug-Ins & Presets

The Plugiator runs one plug-in at a time and can store upto eight plug-ins (instruments) within its internal memory.

Along with your initial purchase of the product you have been supplied with three plug-ins; the Minimax, B4000 and the LightWave. Additionally, the Vocodizer can be downloaded for free after registering your hardware online at [www.use-audio.com/register](http://www.use-audio.com/register).

In addition to these four plug-ins, more plug-ins can be purchased & downloaded from [www.use-audio.com/options](http://www.use-audio.com/options).

## Loading Plug-ins

There are four ways of loading plug-ins within the Plugiator.

1. Using the "PLUGIN" knob located on the control surface of the unit (refer to the previous chapter "Plugiator Control Interface")
2. Loading plug-ins via the Plug-in Manager Software installed on a computer.
3. Using quick pads to load Plug-ins or Presets you have previously assigned to a quick pad number (refer to the previous chapter "Plugiator Control Interface")
4. Loading a plug-in from your MIDI keyboard by sending a MIDI Program Change & playing a note to confirm this selection.

**Example:** By sending the MIDI Program change 101 and playing a note on your keyboard within a short duration you will load the first plug-in (MINIMAX).

Below is the list of plug-ins and Program Change numbers required to load plug-ins.

Program Change	Note	Plug-in
101	any	MINIMAX
102	any	Lightwave
103	any	B4000
104	any	Vocodizer

Additional plug-ins available via the Online Shop

Program Change	Note	Plug-in
105	any	Prodissey
106	any	Pro-12
107	any	Fmagia
108	any	Drums'n'Bass

## Changing Presets

Each plug-in on the Plugiator has 100 internal presets.

**Note:** *Creating, storing, modifying and managing preset files will be discussed later in this User Manual*

There are four ways of changing presets for the currently active plug-in on the Plugiator.

1. Using the „PRESET“ knob located on the control surface of the box to scroll through presets. This will call up the corresponding preset which is stored in the Plugiator box (refer to the previous chapter "Plugiator Control Interface")
2. Changing presets via the Plug-in Manager software installed on a PC. Note that in this case, a preset which is stored in the software will be recalled. These presets reside on your computer, and may not be related to presets stored in your Plugiator box. To quickly store a preset which you called up from the



Plug-in Manager software in the Plugiator box, use the "Store" function of the preset knob.

3. Quick pads to load presets or plug-ins you have previously assigned to that quick pad number. This will call up the corresponding preset which is stored in the Plugiator box (refer to the previous chapter "Plugiator Control Interface")
4. Changing presets from your MIDI keyboard by sending MIDI Program Change messages in the range of 1 to 100. This will call up the corresponding preset which is stored in the Plugiator box.



**Note:** Presets which are stored in the Plugiator box are not necessarily in sync with presets listed in the Plug-In Manager Software. Changes you make in the software will not be stored in the box unless you write the bank to the Plugiator hardware. Vice versa, changes you make to the presets stored in the Plugiator box will not be available in the software unless you read out a bank from the Plugiator box. That was done on purpose to allow management of multiple banks across multiple Plugiator boxes.

## MIDI Program Change List

MIDI Program change	1....100		Loading Presets.
MIDI Program change	101....108	+ any Note	Loading Plug-ins.
MIDI Program change	109....127		Have no effect.

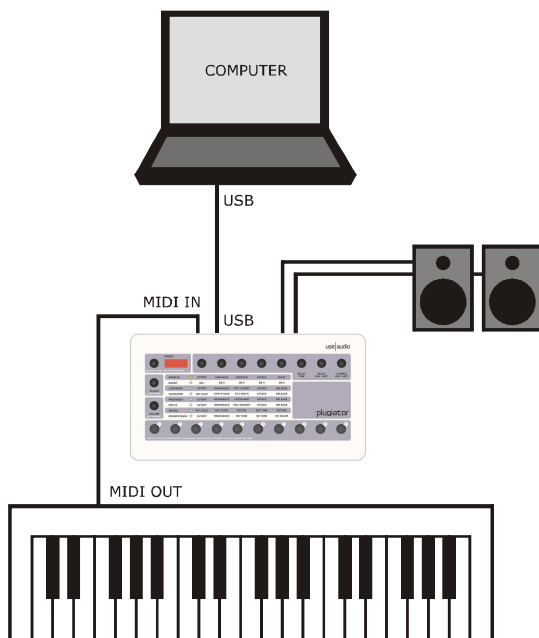
# USB Connections and Driver Installation

The USB interface on the Plugiator is used for two applications:

1. To connect the Plugiator to the Plug-in Manager software installed on your computer / laptop to manage presets and settings.
2. Recording MIDI information from your Plugiator Control interface & MIDI IN directly into your favourite computer music sequencing application.

To install the Plugiator Drivers and Plug-in Manager software on a PC you will require a Windows XP operating system with Service Pack 2 or Windows Vista. For support of the Mac OSX please refer to [www.use-audio.com](http://www.use-audio.com).

Make the following connections in order to begin the installation.



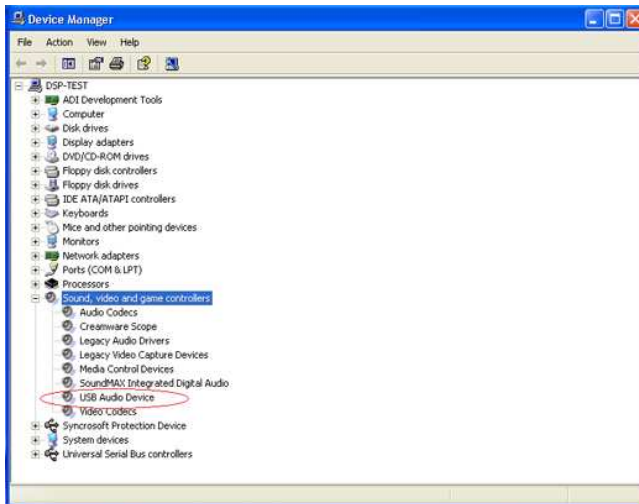
After connecting the Plugiator to your computer's USB port, Windows will automatically detect and install the "USB Audio Driver"

You will see a dialog box (figure shown below) displaying that a new USB device has been found and that Windows is installing drivers for this device automatically.



## Confirming that the Device has been found and the Drivers have been correctly installed:

1. Go to My Computer -> Device Manager.
2. Under your Machine Name -> Sound Video & Game controllers you will find an entry for your Plugiator unit called "USB Audio Device"



3. If you can see the entry for the 'USB Audio Device' within Device Manager the driver installation is correct.

If this step was not successful, unplug the USB cable from the computer and try to use an alternative USB port available.

**Note:** It is recommended that you always use the same USB port to connect the Plugiator to your Computer which you used while installing the drivers. Otherwise, in some computer configurations, your Plugiator may not be recognized.

# Installing the Plug-in Manager Software

To install the Plug-in Manager Software on your computer/laptop, please insert the supplied CD-ROM labeled 'Plug-In Manager Software' into the CD-ROM drive of your computer.



In case the installation does not start automatically, please manually run the setup file from the CD.

The installation software will greet you with information about which software you are about to install. On the following page you will find the license agreement. Please read it carefully and if you agree, select "I accept the license terms" then continue by pressing the 'Next' button.

You can now set the installation path within the 'Installation path' pull-down menu. If you don't set a dedicated path here, the Remote Software will be installed to "C:\Program Files\Use Audio\Plug-in Manager.

The installation requires approximately 11 MB of free hard disk space.



**Note:** The Plug-in Manager requires Adobe Flash Player V9 or higher installed on your computer. You will be prompted to download the latest version of Flash if the installer does not detect this during the installation process.



**Note:** If the Plug-In Manager Software is already installed on your computer, make sure to first uninstall the existing installation before you re-install the software. Find the uninstall option in the program folder of the Plug-In Manager software. If you changed the default presets banks and you want to keep your changes, make sure you save them to a different name and location before you run the uninstall function!

# Using the Plug-in Manager Software

## General

To control your Plugiator with the Plug-in Manager software, you will need to connect the Plugiator to a computer via USB or MIDI. (Please refer to the previous chapter "USB connections and Driver installation")

Double clicking on the shortcut called "Plug-in Manager" will load the application.

The software will prompt you to select the correct drivers to which the Plugiator is connected. If you have connected over USB please select the USB Audio Device for the input and output (figure shown below)



## Panel Layout

On the **left section** of the editor software you will see four panels available.

- Slot Configuration Panel
- Presets Panel
- MIDI Keyboard
- MIDI Monitor

The **top right section** of the Plug-in Manager software displays the list of presets for a plug-in (this area could also display the online sounds if selected)

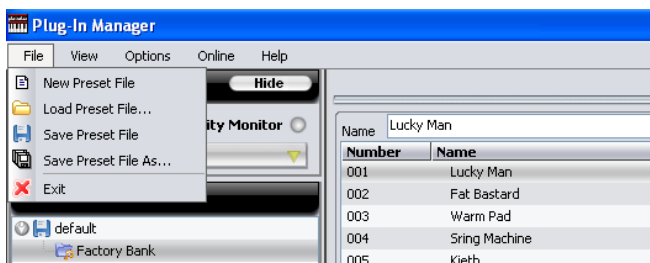
The **lower right section** of the Plug-in Manager displays the user interface of the currently loaded plug-in.



## Software Menus

The Menu Bar located on the top section of the screen allows access to the various Menus in the Plug-in Manager Software.

### File Menu



#### New Preset File

Creates a new preset file for the currently active plug-in. Preset Files contain one or multiple Banks, which again contain up to 100 sounds each.

#### Load Preset File

Loads a preset file previously stored on the hard drive.

#### Save Preset File

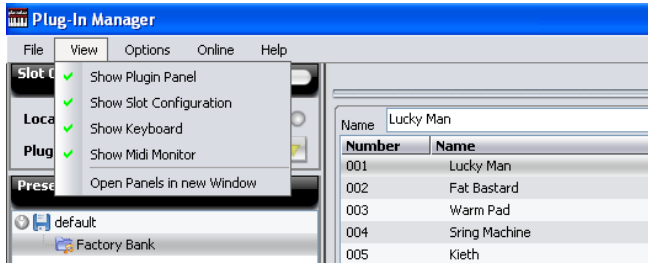
Saves a preset file onto the hard drive.

#### Exit

Click to close the program. Make sure you have saved changes made in a preset list before exiting.



## View Menu



### Show Plug-in Panel

Shows/hides the panel of the loaded plug-in.

### Show Slot Configuration

Shows/hides the Slot Configuration window for selection of your active plug-in.

### Show MIDI Keyboard

Shows/hides the MIDI keyboard window on the left side.

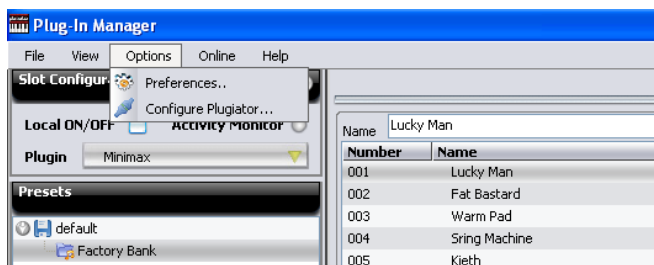
### Show MIDI Monitor

Shows/hides the MIDI monitor window on the left side.

### Open Panel in new Window

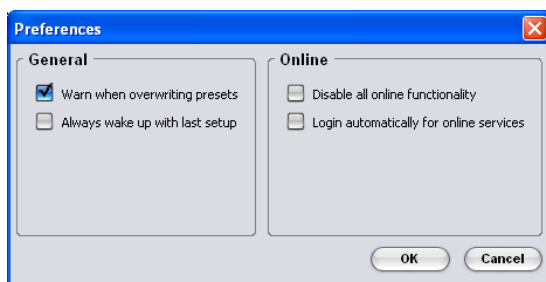
With this option checked it is possible to display the plug-in panel for the loaded device in a separate window from the editor window.

## Options Menu



### Preferences...

Click to open the program preferences dialog box.



**General:** Here you can turn on/off the warning, when overwriting presets and decide whether the Plug-in Manager should wake up with default window settings or with last setup.

**Online Settings:** Disable or enable all online functionality here or change your login name and settings.

## Configure Plugiator

This dialog box is used to configure the MIDI connection settings of the Plugiator. Also, new plug-ins and DSP OS versions can be uploaded to your hardware via this dialog.

**Configure Plugiator**

**Connection Settings**

Midi In Device: USB Audio Device

Midi Out Device: USB Audio Device

Channel: Omni

**Hardware Information**

HW Version: 01.03.0112 HW Serial: EGR4KXFD2 **Refresh**

Slot Locations	Plugin
1	Minimax
2	B4000
3	Lightwave
4	Unknown
5	Unknown
6	Unknown
7	Unknown
8	Unknown

**Firmware Updates**

☒ Install Plugin ☐ Update DSP OS

Slot: Minimax

Filename:  **Browse...**

Key:  **Write**

**Close**

## Connection Settings

**MIDI Device (In / Out):** Use this window to select the MIDI Input and Output device (and port) used for connecting the computer / laptop to the keyboard.

**Channel:** By defining the channel you can change the MIDI channel of the selected MIDI input of the Plug-in Manager.

While using USB as the MIDI In/Out device, set Channel to receive in Omni mode.

## Hardware Information

In this section you will find details of your Plugiator unit, which you may need when downloading firmware updates.

**HW Version:** Shows the version number of your Plugiator unit.

**Serial Number:** Displays the serial number of your Plugiator unit.

This serial number is required while registering online to receive your free copy of the Vocodizer and to purchase additional plug-ins.

**Refresh:** Click on this button to update the information found on the unit, which is useful for checking the above MIDI device setting.

## Slot Locations/Plug-in

This table gives you an overview of which devices are currently installed in your Plugiator unit.

## Firmware Updates

**Browse:** Click on the 'Browse...' button to point the software to the plug-in file (with extension .pil) which you are about to install.

**Key:** Enter the activation key code for the plug-in here (for more details also the following section of this manual).

**Write:** Click on the 'Write' button to upload the plug-in to the Plugiator.

## Making Firmware Updates

Two kinds of updates are possible with the Plugiator:

### 1. DSP - Operating System updates

You can download OS (Operating System) software updates for your Plugiator when they become available.

To update the DSP OS:

1. Click & select "UPDATE DSP OS"
2. Browse for the OS file
3. Click on write (No key is required)



**Note:** You must restart your Plugiator after the download process is complete.



## 2. Plug-in Update - Installing a new Plug-in

Installing a new or updated plug-in requires the key which was provided when purchasing the plug-in. To update a plug-in:

1. Click & select "Install Plugin"
2. Select the Slot into which you will install the plug-in. We recommend you use the slot of the same name so that the plug-in slot will correspond to the labels on your Plugiator box.
3. Browse for the plug-in file which has the file extension **.pil** (which again stands for "Plug-In Loader")
4. Enter the Activation Key which you have received with your plugin.

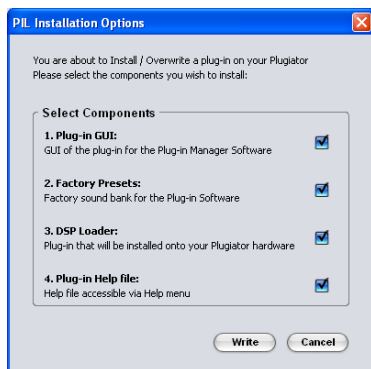


**Note:** If you wish to install an update for *Minimax*, *LightWave* or the *B4000*, the keys you have to enter at this point are as follows:

<b>Minimax</b>	<b>THHA8X2F6RF5</b>
<b>B4000</b>	<b>R5H25X7G8DC6</b>
<b>LightWave</b>	<b>T3XHHHFC92K</b>

5. Click on "Write".

Before the write process starts, a dialog box will prompt you to select the components you wish to install.



This dialog lets you decide which components of the plug-in you wish to install:

**When you install a plug-in for the first time,** make sure all four options are selected - otherwise the installation would not be complete and you could not use the plug-in.

**When you install an updated version of a plug-in which is already installed on your machine, or you wish to install the same plug-in into another slot to gain space for 100 more presets on the Plugiator box,** then you may want to disable one of the following items to keep (and not overwrite) previous versions:

**1. Plug-in GUI:**

Select this option to update/install The GUI for the Plug-in Manager of the plug-in you are about to update / install.

**2. Factory Presets:**

Includes the Preset File that contains the Factory Presets for the plug-in you are about to update / Install.



**Note:** Deselect this option if you want to keep the default preset file of a previous installation. Note that with new versions of a plug-in, preset files may become incompatible and your previous preset file may not work perfectly well with your updated plugin firmware.

**3. DSP Loader:**

Contains the plug-in firmware and 100 presets that will be installed onto your Plugiator Hardware.



**Note:** If you wish to install the Plug-In Manager on a second machine may want to deselect this option in case you wish not to overwrite your existing sound bank and plug-in firmware on the Plugiator.

**4. Plug-in Help File:**

Includes the HTML help file found in the Help Menu.



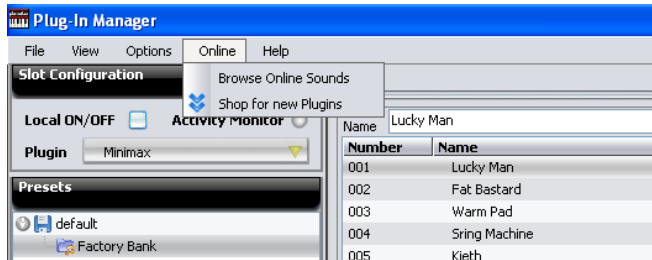
**Note:** Please restart your Plugiator (power off, wait three seconds, then power on) after the download process is complete.



**Note:** In the rare event that the write process aborts with an error, you may try to repeat the process until the plug-in has been successfully written to the box. Such event indicates that there is a problem with a specific USB port or the chipset of your computer. In case writing does not succeed even after multiple attempts, please resort to writing the plug-in from another computer.



## Online Menu



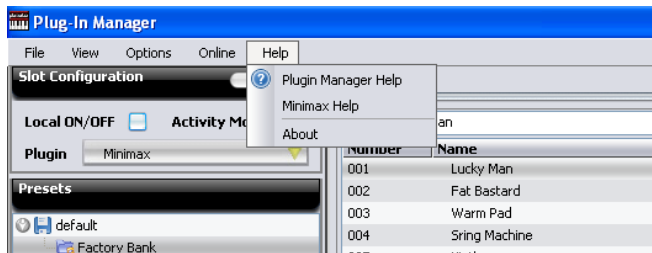
### Browse Online Sounds

Opens the Online Sound panel on the right side if activated in Online Settings.

### Shop for new Plug-ins

Opens the Online shop for the browsing the latest plug-ins and to register your product.

## Help Menu



### Plug-in Manager Help

Opens the Plug-in Manager HTML Help Page.

### <Synth Name> Help

Opens the HTML Help Page for the currently loaded Plug-in.

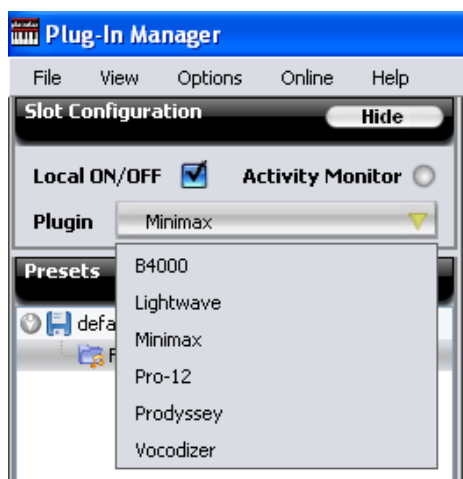
### About

About the Plug-in Manager version.

# Using the Plugiator

## Slot Configuration

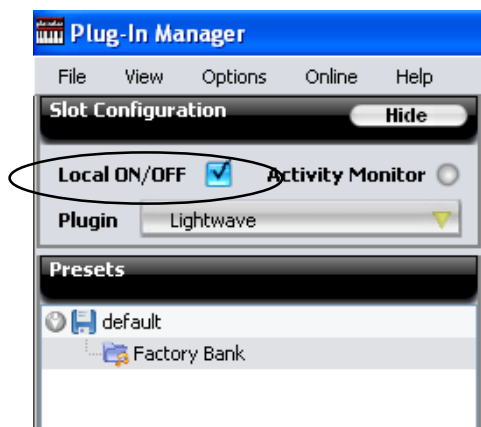
In this section you can see the currently loaded plug-in. To choose a different plug-in click on the arrow and select from the options available in the pull-down menu.



**Note:** The number of plug-ins being displayed in the pull-down menu is dependent on the number of plug-ins you have installed. Please visit [www.use-audio.com/options](http://www.use-audio.com/options) for more information about optional plug-ins available for your Plugiator.

## Local ON/OFF

This option will switch Local ON or OFF.



### LOCAL ON:

When local is ON, MIDI messages from the MIDI input and the Plugiator control panel will be sent to the Plugiator's internal sound engine.

Use Local ON while using the Plugiator in standalone mode.

### LOCAL OFF:

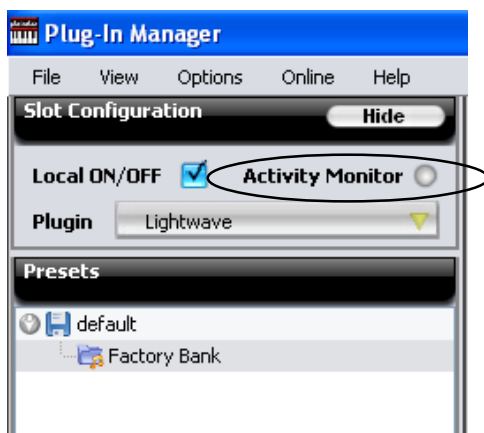
When local is OFF MIDI messages from the MIDI input will not be sent directly to the Plugiator's internal engine, however will be forwarded to USB.

The Plugiator will then be triggered only by external MIDI signals received over USB.

When using the Plug-in Manager along with a MIDI sequencing software use LOCAL OFF. Please refer to „Simultaneously using the Plug-in Manager & a MIDI Sequencing application for Recording and Playback"

## Activity Monitor

The Activity Monitor displays MIDI activity from both the software (Plug-in Manager) & the Plugiator.



When the Active Monitor LED shows **Green** it is **sending** MIDI information from the Plug-in Manager software to the Output Driver (Plugiator or sequencing application)

When the Active Monitor LED shows **Red** it is **receiving** MIDI information from the MIDI input driver (Plugiator or sequencing application)

## Presets

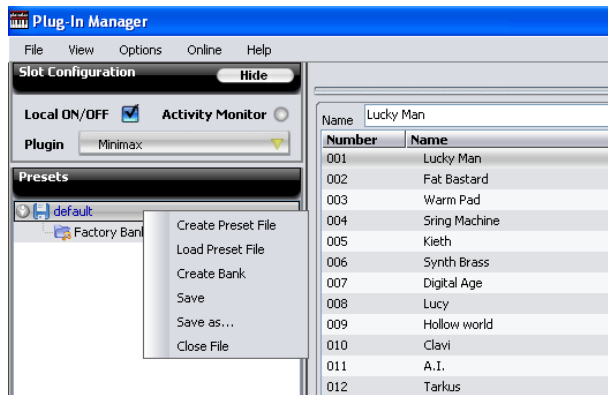
In this section you can see the loaded preset files and banks for the currently active plug-in.

The library has been structured in the following manner:

- Plug-in (one of the 8 plug-ins available on the Plugiator box)
  - Preset File (contains one or more Banks)
    - Bank (contains Presets 1 till 100)
      - Preset (contains settings for the Preset)

## Preset File - Context Menu

Right-click on the Preset File icon to open the context menu:



### Create Preset File

Creates a new empty preset file with an empty default Bank.

### Load Preset File

Opens the file dialog for browsing a preset file on your hard disk.

### Create Bank

Creates a new preset Bank in the selected preset file.

## Save

For saving the preset file.

## Save as ...

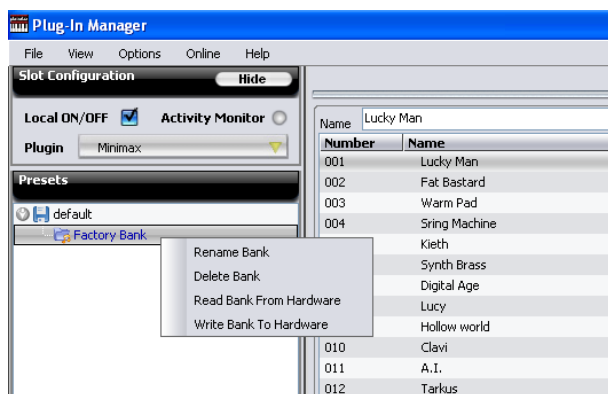
For saving a copy of the preset file with new name.

## Close File

For closing the selected preset file.

## Bank - Context Menu

Right-click on the Bank icon to open the context menu:



## Rename Bank

Opens a dialogue in which you can rename the selected Bank.

## Delete Bank

Deletes the selected Bank directly.

## Read Bank from Hardware

Reads the Bank, that is saved on your Plugiator's internal memory.

## Write Bank to Hardware

Writes the selected Bank to your Plugiator's internal memory.

## MIDI Keyboard

The Plug-In Manager Software's built-in MIDI keyboard enables you to quickly check sounds without using an external keyboard or sequencer software - you can play notes with the computer's mouse or your computer's alphabetical keyboard.

### Octave

Sets the range of the MIDI keyboard in octave steps.

### All Notes Off

Sends an "all notes off" MIDI message to the Plugiator box in order to stop all current note activities / sound. Stuck notes can easily occur when using the on-screen MIDI keyboard with your computer's alphabetical keyboard while using the mouse to operate the software. We purposely let you create such stuck notes as they may be useful when using the UI to change parameters of a sound.

### Hide/Show

You can hide or show this dialog by clicking this button.



## MIDI Monitor

The 'MIDI Monitor' button is located on the lower left of the editor software's display. Click on it to view a list of incoming and outgoing MIDI messages.

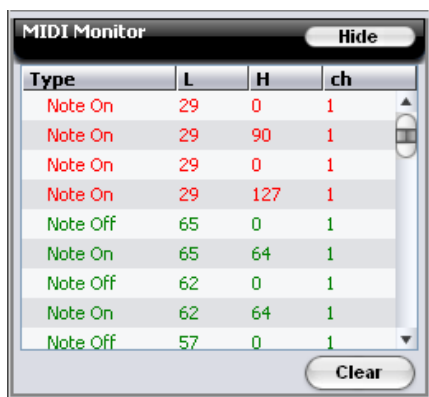
**Incoming** messages will be displayed in **RED** and **outgoing** messages in **GREEN**.

### Clear

Removes all entries from the MIDI monitor's display list.

### Hide/Show

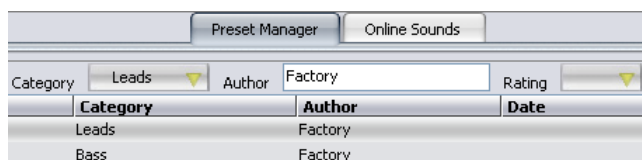
You can hide or show this dialog by clicking this button.





## Tabs

These tabs allow the user to switch between Presets stored locally and Presets stored on the Online Sound Server.



**Note:** In order to see and access sounds on the Online Sound Server, your computer must be online with the internet. You are also required to register with the server to obtain access.

## Preset Manager

This tab contains the preset list of the loaded plug-in. On top of the list you find the details of the selected preset. Here you can change the preset name and other information for this preset like Category, Author, Rating and Comment.

Below you can see the listed presets from 1... 100. Each Bank has 100 presets. On the right of the list you find a scroll bar for scrolling to all presets of the selected Bank.

Presets are created via a context menu. Right-click on any preset and you will have four options:



### **Restore**

Restores the settings that belong to the selected preset. A doubleclick on a preset will do the same.

### **Overwrite**

Click or press „Ins" key to overwrite the selected preset with the current settings.

### **Delete**

Click or press the „Del" key to delete the selected preset. The preset settings will be erased and the selected preset will be blank.

### **Upload**

Uploads the selected preset to Online Sound server. (please refer to "Online Sounds"

## **Engaging Presets**

When engaging a preset in the Plug-in Manager, the controller values for that preset are sent to the Plugiator - however, the preset number on the Plugiator does not change.

Similarly when engaging a preset via the Plugiator, the controller values are updated in the Plug-in manager GUI but the preset number does not change. The reason for that is that the Plug-in Manager can work concurrently with multiple Preset Banks and any preset from any bank can be engaged onto the Plugiator. Meanwhile the Plugiator can have just one active Bank (100 Presets).

The currently active Bank on the Plug-in Manager and the Plugiator can only be synchronized by using the "Read Bank from Hardware" and "Write bank to Hardware" functions.

## Modifying Presets using the Plugiator Control Interface

Engage a preset using the Preset knob on your Plugiator control interface.

Make your parameter modifications (via your Plugiator control interface, Keyboard controller or Plug-In Manager GUI)

After making your changes press and hold down the Preset Knob for three second to store/overwrite the Preset into the internal memory of your Plugiator.

To update changes made via the Plugiator into the Plug-In Manager right click on any Preset Bank and click on „Read Bank from Hardware“. Please note that the Plugiator box does not store any preset names, and presets read from the Plugiator box will be given a default name which contains the preset number.

## Modifying Presets using the Plug-In Manager Software

Engage a preset via the Plug-in Manager.

Make your parameter modifications (via your Plugiator Control interface, Keyboard Controller or Plug-in Manager GUI)

After making your changes right click on the preset and click on Overwrite.

To save the modified preset with a different name right click on an empty preset and click on Overwrite.

To update changes made via the Plug-In Manager to the Plugiator box, right click on the Bank you wish to update and click on „Write Bank to hardware“.



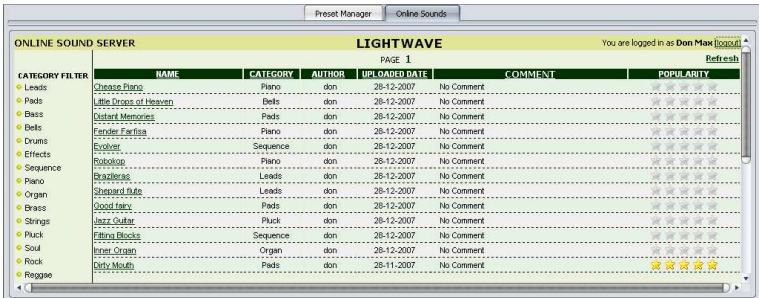
**Note:** Please be aware that the „Write Bank to hardware“ function will overwrite any presets previously stored for the respective plug-in on the box.

# Online Sounds

Clicking on the Online Sounds tab will display the login page of the online sound server. If you are a new user, you will have to fill the User registration form. Next use your login and password to access the sound server.

You will see a list of presets for the corresponding plug-in selected from the Slot configuration drop down.

1. Click on a preset to engage and hear it.
2. Click and drag a preset to a folder in your Presets panel in order to save it onto your computer.
3. To upload a preset onto the server, click on "Upload" after right clicking on a preset in the preset window view.



The screenshot shows the 'Online Sound Server' window with the 'Online Sounds' tab selected. It displays a table of presets. The table has columns: CATEGORY FILTER, NAME, CATEGORY, AUTHOR, UPLOADED DATE, COMMENT, and POPULARITY. The 'POPULARITY' column shows star ratings. The user is logged in as 'Don Max'.

CATEGORY FILTER	NAME	CATEGORY	AUTHOR	UPLOADED DATE	COMMENT	POPULARITY
Leads	Chopin Piano	Piano	don	28-12-2007	No Comment	☆☆☆☆
Pads	Little Drops of Heaven	Bells	don	28-12-2007	No Comment	☆☆☆☆
Bass	Outback Memories	Pads	don	28-12-2007	No Comment	☆☆☆☆
Bells	Fender Fartica	Piano	don	28-12-2007	No Comment	☆☆☆☆
Drums	Cyber	Sequence	don	28-12-2007	No Comment	☆☆☆☆
Effects	Polkopol	Piano	don	28-12-2007	No Comment	☆☆☆☆
Sequence	Quadrans	Leads	don	28-12-2007	No Comment	☆☆☆☆
Piano	Quadrans	Leads	don	28-12-2007	No Comment	☆☆☆☆
Organ	Good Day	Pads	don	28-12-2007	No Comment	☆☆☆☆
Bells	Good Day	Pads	don	28-12-2007	No Comment	☆☆☆☆
Strings	Just Out	Pads	don	28-12-2007	No Comment	☆☆☆☆
Pluck	Fatima Block	Sequence	don	28-12-2007	No Comment	☆☆☆☆
Soul	Inner Organ	Organ	don	28-12-2007	No Comment	☆☆☆☆
Rock	Curly Mouth	Pads	don	28-12-2007	No Comment	☆☆☆☆
Reggae						

Presets are rated with stars in the "Popularity" field based on the total number of downloads made by Plugiator users within a certain recent period.

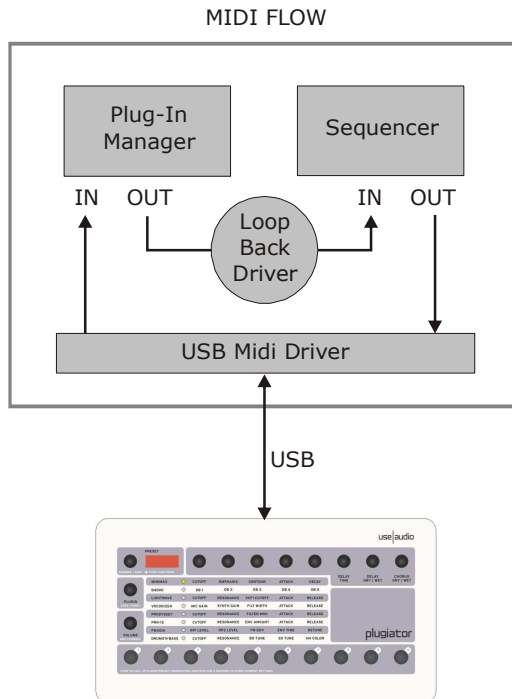
**Note:** By uploading your sound to the Online Sound Server, you make your sound available to the public and you grant other users as well as Use Audio Inc. the right to use, copy and distribute your sound without limitations.

# Recording & MIDI

## Simultaneously using the Plug-in Manager and a MIDI Sequencing Application for Recording and Playback

For users who wish to use the Plugiator along with the Plug-in Manager and a Sequencing application its important to read through the following chapter.

Since both the Plug-in Manager and the MIDI Sequencing application (eg: Cubase) can not use the same driver (USB MIDI) to communicate with the Plugiator, a so called „Loop Back Driver“ must be used in order to use the Plugiator with both applications at the same time.



Several third party virtual „MIDI Loop Back“ drivers are available as freeware on the internet. One such application is LoopBe1™ available for download on

[www.nerds.de/en/loopbe1.html](http://www.nerds.de/en/loopbe1.html)

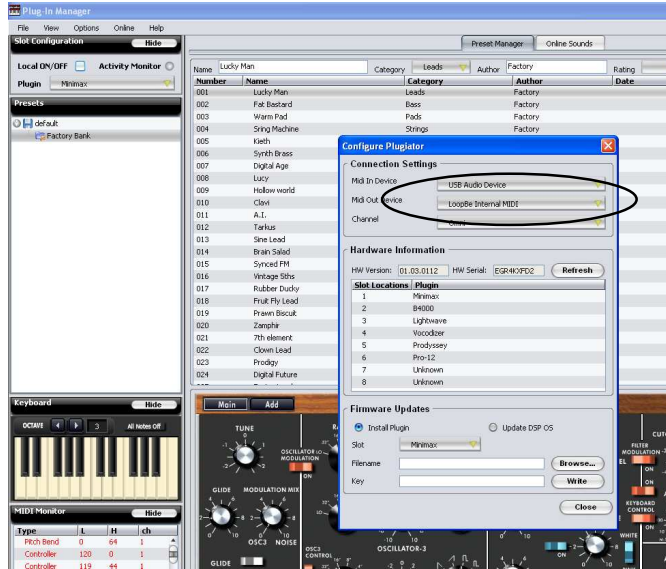
After installing your internal MIDI Looping software make sure that it is loaded. In the case of LoopBe1 you would see the icon in the status bar.



Now use the following setup:

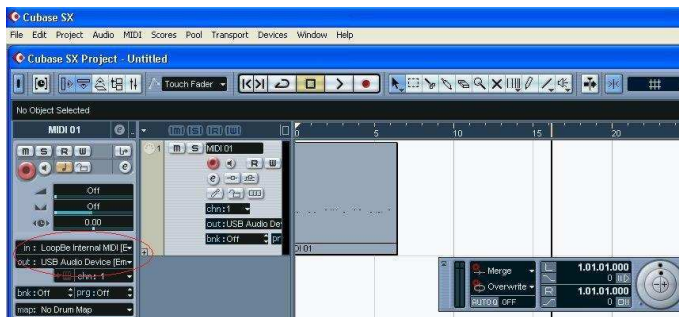
1. Launch the Plug-in Manager.
2. Click on LOCAL OFF in order to allow the Plugiator sounds to be triggered only via USB.
3. Go to Plugiator Configuration and select MIDI IN as USB Audio Device & MIDI OUT as LoopBe1 (refer to the image on the following page)
4. Open your sequencing application (e.g. Cubase) and create a MIDI track.
5. For MIDI IN use LoopBe1 & for MIDI OUT USB Audio Device.

This enables MIDI signals received via USB from the Plugiator to be routed to the Plug-in Manager and then to the sequencing application.



The Plugiator Plug-in Manager will now use the LoopBe1 driver to send MIDI information to the Sequencing application (Cubase).

Your Sequencing application will be connected to the Plugiator Board. via the USB Audio driver. (refer to the image below)

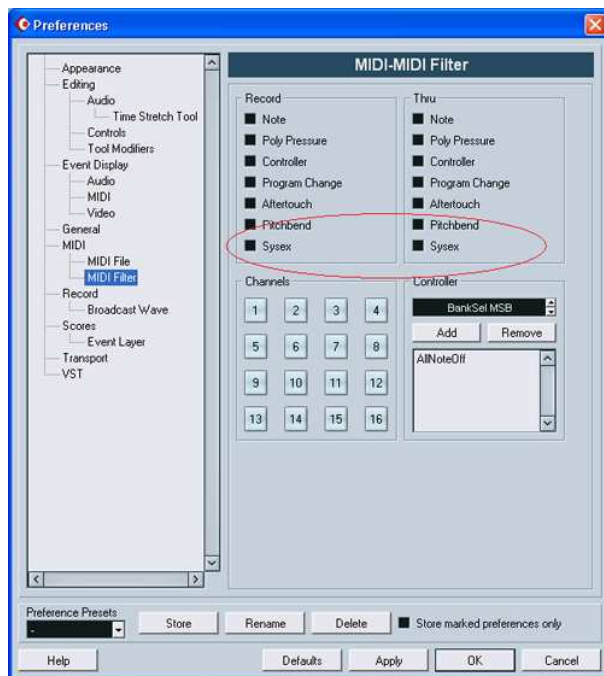


**Note:** Be sure that you have loaded the Plugiator Plug-in Manager before starting your sequencing application. If you have more than one USB Audio Device connected to your system, you will have to make the correct selection from the pull-down menu for the Plugiator within your sequencing application.

## ATTENTION!

Some MIDI sequencing applications have System Exclusive messages filtered by default. You will require to unselect System Exclusive messages from the filter so that MIDI messages can pass via Cubase towards the Plugiator.

For example within Cubase, go to File -> Preferences and click on MIDI Filter. Make sure that Sysex is not ticked.





# Specifications

## Synthesis Technology

Virtual Circuit Modelling, Physical Modelling

## Sampling Rate and Bit Resolution

44.1 kHz (internal over-sampling of upto 176khz)

internal digital audio path 32 bit

## Polyphony

Minimax	10 voices
B4000	91 voices (full)
Lightwave	12 voices
Vocodizer	6 voices
Prodissey	10 voices
Pro-12	12 voices
others	to be announced

## Control Connections

MIDI In, MIDI Through, USB Full Speed USB rev 1.1

## Input

Mic Input 1 x 1/4 inch (6,3mm) mono TRS connector

## Outputs

Analog Line Output 2 x 1/4 inch (6,3mm) mono TS connectors

Headphone Output 1 x 1/4 inch (6,3mm) stereo TRS connector

## Power Supply

110/240V to 9V DC, min. 500mA, center pin of plug is „+“

## Dimensions / Size

approx. 306mm x 166mm x 43mm

# Frequently Asked Questions (FAQ)

## 1. How do I install more plug-ins?

After purchasing an additional plug-in for your Plugiator you will download a \*.PIL file which you install using the Plug-in Manager Software via the „Options/Configure Plugiator“ dialog. To allow installation, you will be supplied with an Activation Key which is specific to your personal Plugiator box.



**Attention!** While installing the \*.PIL file on additional computers please ensure that you deselect „DSP Loader“ in the „Plug-in Installation Options“ to avoid overwriting presets already stored on your Plugiator unit.

## 2. What's included in that Plug-in Loader (\*.PIL file) I have downloaded?

The .PIL file contains the GUI, the factory presets, the online help files and the actual DSP Loader. When installing a PIL file, you will be prompted by the Plug-in Manager Software to confirm the components you would like to install.

## 3. The Activation Key does not work?

Each purchased plug-in is usable on a single Plugiator unit. The Key you have received for your newly purchased Plug-in is hardware specific. Make sure that you are using the activation key that was specifically provided for your Plugiator unit.

## 3. Which Key should I enter for updating my Minimax/B4000/LightWave plugin?

The Key you have to enter is as follows: Minimax: THHA8X2F6RF5, B4000: R5H25X7G8DC6, LightWave: T3XHHHFC92K

## 4. Why does the Plugiator take a few seconds to load a new plug-in?

While some sample based keyboards just need to set another pointer to switch a sound (and thereby switch sounds within a split second), the Plugiator has to load a new software program onto the DSP. It therefore may take 1-3 seconds to engage a new plug-in on your Plugiator hardware. Keep in mind that the Plugiator does not rely on playback of sampled sounds but emulates real synthesizers via software technology.

## 5. How do I backup or use my Preset Files on multiple computers?

By default, new Preset files are stored in the [Local Drive]\Program Files\Plug-in Manager\chrome\devices\[plug-in name]\presets. Please ensure that you have backed up this directory before un-installing or deleting your Plug-in Manager Software installation.

## 6. I hear no sound...

1. Please ensure that the Master Volume knob/slider is opened.
2. In the Plug-in Manager software, please ensure that Local has been set to ON. Whenever the Plugiator is powered up, it operates in Local ON mode by default.
3. Check that the MIDI Monitor in the Plug-In Manager Software is showing incoming MIDI and that the Plugiator is set the MIDI channel you are using (or OMNI). If not, please check your MIDI keyboard with other MIDI equipment. You may also want to try an alternate MIDI cable, these things may break as you know.
4. If you have just finished updating the DSP OS of your Plugiator, please ensure that you have re-started the unit.
5. Please check the cabling of your audio outputs, your mixer and monitors.

## 7. What are Preset Files, Preset banks & Presets?

For the convenience of file sharing of presets for the Plugiator, we have implemented a structure for preset saving which is as follows:

- Plug-in (one of the 8 plug-ins available on the Plugiator)
  - Preset File (contains one or more Bank files)
    - Bank file (contains one or more Plug-in Presets)
      - Preset (contains settings for the Preset)

## 8. Can I change Plug-ins and Presets from within my MIDI Sequencer?

The Plugiator uses a Program Change message to load a certain synth or a certain preset. Therefore you can easily „record“ and „play back“ the commands to switch sounds of the Plugiator. Use Program Change numbers 101-108 to load synths and Program Changes from 1-100 to change presets of the selected plug-in.

## 9. Why can't I use the „XYZ“ VST Plug-In with my Plugiator?

VST Plug-Ins utilize your computer's main processor to generate their sounds, and they rely on a very specific software environment under Microsoft Windows. It would be very expensive to put such an environment into a table top synth. In contrast, Plugiator utilizes a special DSP processor which was designed for audio processing. Such DSPs are very powerful and affordable, but they have a different command set than your Intel/AMD computer so that VST code will not run on DSPs and vice versa. However, today's floating point DSPs have significant advantages over host processors - they provide facilities which help maintaining a fantastic sound quality.

# Minimax MIDI Implementation Table

## MIDI Controller Changes / Polyphonic Aftertouch Messages

CC	Parameter	CC	Parameter	pAT	Parameter	pAT	Parameter
1	Modulation	65	Glide Switch	1		65	
2		66	Sostenuto	2		66	
3		67	Soft Pedal	3		67	
4		68	Single Mode	4		68	
5	Glide Time	69		5		69	
6		70		6		70	
7	Plugiator Device Volume	71	Emphasis	7		71	Chorus Rate
8		72	Osc2 Frequency	8		72	Chorus Phase
9		73	Amount of Contour	9		73	Chorus Depth
10	Delay Dry/Wet	74	Cutoff	10		74	Chorus Feedback
11	Preset Volume	75		11		75	Chorus/Flanger
12		76		12		76	
13	Amp Env Attack	77		13		77	
14	Amp Env Decay	78		14		78	
15	Amp Env Sustain	79	Osc1 Range	15		79	
16	Osc2 Range	80	Osc1 Waveform	16		80	
17	Vcf Env Attack	81	Amp Env Velocity	17		81	Delay Time Left
18	Vcf Env Decay	82		18		82	Delay Note Left
19	Vcf Env Sustain	83	Osc2 Waveform	19		83	
20	Osc3 Range	84	Vcf Env Velocity	20		84	Delay Damp Left
21	Tune	85	Osc3 Frequency	21		85	Delay Level Left
22	Osc Modulation	86	Osc3 Waveform	22		86	Delay BPM Left
23	Pitch AT	87	Osc3 Control	23		87	
24	Band Range	88		24		88	
25	Osc1 Volume	89		25		89	
26	Osc2 Volume	90		26		90	Delay Cross
27	Osc3 Volume	91	Cl. Dry/Wet	27		91	Delay Time Right
28	Osc1 Switch	92		28		92	Delay Note Right
29	Osc2 Switch	93	Synth / Mic Volume	29		93	
30	Osc3 Switch	94		30		94	Delay Damp Right
31		95		31		95	Delay Level Right
32		96		32		96	Delay BPM Right
33	Noise Volume	97		33		97	Delay BPM
34	Noise Switch	98		34		98	Effects Bypass
35	Noise Type	99		35		99	
36	External Volume	100		36		100	
37	External Switch	101		37		101	
38	Synth Feedback	102		38		102	
39		103		39		103	
40		104		40		104	
41		105		41		105	
42		106		42		106	
43		107		43		107	
44		108		44		108	
45		109		45		109	
46		110		46		110	
47	Vcf Modulation	111		47		111	
48	Vcf Hybrid Ctrl1	112		48		112	
49	Vcf Hybrid Ctrl2	113		49		113	
50	Vcf AT	114		50		114	
51	Amp AT	115		51		115	
52		116		52		116	
53		117		53		117	
54		118		54		118	
55		119	Delay Feedback	55		119	
56	MW Intensity	120	All Sounds Off	56		120	
57	MW Offset	121		57		121	
58	Modulation Mix	122		58		122	
59	Env Decay	123		59		123	
60	Env Retrigger	124		60		124	
61	Low Note Priority	125		61		125	
62		126		62		126	
63		127		63		127	
64	Sustain Pedal			64			

# B4000 MIDI Implementation Table

## MIDI Controller Changes / Polyphonic Aftertouch Messages

CC	Parameter	CC	Parameter	pAT	Parameter	pAT	Parameter
1	Modulation	65		1		65	
2	Horn Slow Speed	66	Sostenuto	2		66	
3	Horn Fast Speed	67	Soft Pedal	3		67	
4	Horn Acceleration	68	Rotor On/Off	4		68	
5	Horn Brake	69	MW/AT Select	5		69	
6	Horn Tone	70		6		70	
7	Plugiator Device Volume	71	Vibrato Upper On/Off	7		71	Chorus Rate
8	Bass Slow Speed	72	Rotor Speed	8		72	Chorus Phase
9	Bass Fast Speed	73	Vibrato Type	9		73	Chorus Depth
10	Delay Dry/Wet	74	Vibrato Lower On/Off	10		74	Chorus Feedback
11	Swell	75	Bass Brake	11		75	Chorus/Flanger
12	Upper 16'	76	Bass Tone	12		76	
13	Upper 5 1/3'	77	Mic Spread	13		77	
14	Upper 8'	78	Mic Balance	14		78	
15	Upper 4'	79		15		79	
16	Upper 2 2/3'	80		16		80	
17	Upper 2'	81		17		81	Delay Time Left
18	Upper 1 3/5'	82	Pedal 16'	18		82	Delay Note Left
19	Upper 1 1/3'	83	Pedal 5 1/3'	19		83	
20	Upper 1'	84	Pedal 8'	20		84	Delay Damp Left
21	Lower 4'	85	Pedal 4'	21		85	Delay Level Left
22	Lower 2 2/3'	86	Pedal 2 2/3'	22		86	Delay BPM Left
23	Lower 2'	87	Pedal 2'	23		87	
24	Lower 1 3/5'	88	Lower 16'	24		88	
25	Lower 1 1/3'	89	Lower 5 1/3'	25		89	
26	Lower 1'	90	Lower 8'	26		90	Delay Cross
27		91	Chorus Dry/Wet	27		91	Delay Time Right
28		92		28		92	Delay Note Right
29		93	Synth / Mic Volume	29		93	
30	Output Volume	94		30		94	Delay Damp Right
31		95		31		95	Delay Level Right
32		96		32		96	Delay BPM Right
33		97		33		97	BPM
34		98		34		98	Effects Bypass
35		99		35		99	
36		100		36		100	
37	Perc Harmonic	101		37		101	
38	Perc Level	102		38		102	
39	Perc Decay	103		39		103	
40	Perc On/Off	104		40		104	
41	Key Click	105	Lower Split Key	41		105	Boost
42	Condition	106	Upper Split Key	42		106	
43	Tuning	107		43		107	
44	Leakage	108	Pedal Octave	44		108	
45	Distortion	109	Lower Octave	45		109	
46	Attack	110	Upper Octave	46		110	
47	Release	111		47		111	
48	Velocity On/Off	112		48		112	
49		113		49		113	
50		114		50		114	
51		115		51		115	
52	Drive	116		52		116	
53	Drive On/Off	117		53		117	
54	Tone Treble	118		54		118	
55	Tone Bass	119	Delay Feedback	55		119	
56	Mixer UPPER	120	All Notes Off	56		120	
57	Mixer LOWER	121		57		121	
58	Mixer PEDAL	122		58		122	
59	MIDI Channel Upper	123		59		123	
60	MIDI Channel Lower	124		60		124	
61	MIDI Channel Pedal	125		61		125	
62	Mic Distance	126		62		126	
63	Bass Acceleration	127		63		127	
64	Sustain Pedal			64			

# LightWave MIDI Implementation Table

## MIDI Controller Changes / Polyphonic Aftertouch Messages

CC	Parameter	CC	Parameter	pAT	Parameter	pAT	Parameter
1	Modulation	65		1		65	
2	Lfo2 Clock Switch	66	Sostenuto	2		66	
3	PB Range	67	Soft Pedal	3		67	
4	Mix Gain	68		4		68	
5		69	Lfo1 Phase	5		69	
6	Common Osc Coarse	70	Lfo1 Fade In	6		70	
7	Plugiator Device Volume	71	Vcl2 Resonance	7		71	Chorus Rate
8	Common Osc Fine	72	Vcl2 Keyfollow	8		72	Chorus Phase
9	Common Osc PM Source	73	Vcl2 Env Depth	9		73	Chorus Depth
10	Delay Dry/Wet	74	Vcl2 Cutoff	10		74	Chorus Feedback
11	Preset Volume	75	Pun1	11		75	Chorus/Flinger
12	Amp Env Lvel	76	Pun1 Mod Source	12		76	
13	Amp Env Attack	77	Pun1 Mod Depth	13		77	
14	Amp Env Decay	78	Pun2	14		78	
15	Amp Env Sustain	79	Pun2 Mod Source	15		79	
16	Amp Env Release	80	Pun2 Mod Depth	16		80	
17	Vcl Env Attack	81	Osc1 Grunge	17		81	Delay Time Left
18	Vcl Env Decay	82	Vcl Env TKF	18		82	Delay Note Left
19	Vcl Env Sustain	83	Vcl Env Tvel	19		83	
20	Vcl Env Release	84	Vcl Env Lvel	20		84	Delay Damp Left
21	Osc1 PM Depth	85	Amp Env TKF	21		85	Delay Level Left
22	Osc2 Waveform	86	Amp Env TYEL	22		86	Time / BPM Switch Left
23	Osc2 Coarse	87	Amp Env LEVEL	23		87	
24	Osc2 Fine	88	Lfo1 Waveform	24		88	
25	Osc2 Grunge	89	Lfo1 Rate	25		89	
26	Osc2 PM Source	90	Lfo1 Retrigger	26		90	Delay Cross
27	Osc2 PM Depth	91	Chorus Dry/Wet	27		91	Delay Time Right
28	Osc1 Level	92	Lfo1 Delay	28		92	Right Delay Note
29	Osc1 Level Mod Source	93	Synth/ Mix Volume	29		93	
30	Osc1 Level Mod Depth	94	Lfo1 Fade Out	30		94	Delay Damp Right
31	Osc1 Balance	95	Lfo1 Rate KF	31		95	Delay Level Right
32		96	Lfo1 Rate Mod Source1	32		96	Time / BPM SwitchRight
33	Osc1 Balance Mod Source	97	Lfo1 Rate Mod Depth1	33		97	BPM
34	Osc1 Balance Mod Depth	98	Lfo1 Rate Mod Source2	34		98	Effects Bypass
35	Osc2 Level	99	Lfo1 Rate Mod Depth2	35		99	
36	Osc2 Level Mod Source	100	Lfo1 Level Mod Source	36		100	
37	Osc2 Level Mod Depth	101	Lfo1 Level Mod Depth	37		101	
38	Osc2 Balance	102	Lfo1 Clock Switch	38		102	
39	Osc2 Balance Mod Source	103	Lfo1 Note Length	39		103	
40	Osc2 Balance Mod Depth	104	Lfo2 Waveform	40		104	
41	Vcl Mode	105	Lfo2 Rate	41		105	Boost
42	Common Osc PM Depth	106	Lfo2 Retrigger	42		106	
43	CF Mod Source	107	Lfo2 Phase	43		107	
44	CF Mod Depth	108	Lfo2 Delay	44		108	
45	Res Mod Source	109	Lfo2 Fade In	45		109	
46	Res Mod Depth	110	Lfo2 Fade Out	46		110	
47	Vcl1 Type	111	Lfo2 Rate KF	47		111	
48	Osc1 Waveform	112	Lfo2 Rate Mod Source1	48		112	
49	Osc1 PM Source	113	Lfo2 Rate Mod Depth1	49		113	
50		114	Lfo2 Rate Mod Source2	50		114	
51	Osc1 Coarse	115	Lfo2 Rate Mod Depth2	51		115	
52	Vcl1 CF Mod Source	116	Lfo2 Level Mod Source	52		116	
53	Vcl1 CF Mod Depth	117	Lfo2 Level Mod Depth	53		117	
54	Vcl1 Res Mod Source	118	Lfo2 Note Length	54		118	
55	Vcl1 Res Mod Depth	119	Delay Feedback	55		119	
56	Vcl2 Type	120	All Notes Off	56		120	
57	Vcl1 Cutoff	121		57		121	
58	Vcl1 Resonance	122	Local Control Off	58		122	
59	Vcl1 Keyfollow	123		59		123	
60	Vcl1 Env Depth	124		60		124	
61	Vcl2 CF Mod Source	125		61		125	
62	Vcl2 CF Mod Depth	126		62		126	
63	Vcl2 Res Mod Source	127		63		127	
64	Sustain Pedal			64			

## Vocodizer MIDI Implementation Table

### MIDI Controller Changes / Polyphonic Aftertouch Messages

CC	Parameter	CC	Parameter	pAT	Parameter	pAT	Parameter
1	Modulation	65	Unvoiced source select	1		65	
2	BPf2 Pan	66	Sostenuto	2		66	Vd Env Attack
3	BPf2Gain	67	Soft Pedal	3		67	
4	Solo	68	LoCutFreq	4		68	Vd Env Decay
5	Level (UV Source)	69	LPF Gain	5		69	
6	BPf3Gain	70	BPf1Gain	6		70	
7	Plugiator Device Volume	71	Release	7		71	Chorus Rate
8	BPf4Gain	72	Lb1 Rate	8		72	Chorus Phase
9	BPf5Gain	73	Analyse filter width	9		73	Depth
10	Delay Dry/Wet	74	Attack	10		74	Chorus Feedback
11	Preset Volume	75	BPf6Gain	11		75	Chorus/Flanger
12		76	BPf7Gain	12		76	
13	IsGain (Analyse)	77	BPf8Gain	13		77	
14	IsGain (Synth)	78	BPf9Gain	14		78	
15	Time	79	BPf10Gain	15		79	
16	Threshold	80	BPf11Gain	16	Os1 Waveform	80	
17	LPF Gain	81	BPf12Gain	17	Os1 Coarse	81	Delay Time Left
18	BPf Gain	82	BPf13Gain	18	Os1 Fine	82	Delay Note Left
19	HPF Gain	83	BPf14Gain	19	Os1 Grunge	83	
20		84	BPf15Gain	20		84	Delay Damp Left
21	BPf6Freq	85	BPf16Gain	21		85	Delay Level Left
22	BPf7Freq	86	BPf17Gain	22	Os2 Waveform	86	Delay Time / BPM Left
23	BPf8Freq	87	BPf18Gain	23	Os2 Coarse	87	
24	BPf9Freq	88	BPf19Gain	24	Os2 Fine	88	
25	BPf10Freq	89	BPf20Gain	25	Os2 Grunge	89	
26	BPf11Freq	90	HPF Gain	26		90	Delay Cross
27	BPf12Freq	91	Chorus Dry/Wet	27		91	Delay Time Right
28	BPf13Freq	92	BPf1 Pan	28	Os1 Level	92	Delay Note Right
29	BPf14Freq	93	Synth / Mic Volume	29	Os1 Level Mod Source	93	
30	BPf15Freq	94	BPf3 Pan	30	Os1 Level Mod Depth	94	Delay Damp Right
31	BPf16Freq	95	BPf4 Pan	31		95	Delay Level Right
32		96	BPf5 Pan	32		96	Delay Time / BPM Right
33	BPf17Freq	97	BPf6 Pan	33		97	BPM
34	BPf18Freq	98	BPf7 Pan	34		98	Effects Bypass
35	BPf19Freq	99	BPf8 Pan	35	Os2 Level	99	
36	BPf20Freq	100	BPf9 Pan	36	Os2 Level Mod Source	100	Vd Env Sustain
37	HPF Freq	101	BPf10 Pan	37	Os2 Level Mod Depth	101	Vd Env Release
38	LPF (Matrix)	102	BPf11 Pan	38		102	Vd Env TKF
39	BPf1 (Matrix)	103	BPf12 Pan	39		103	Vd Env Lvl
40	BPf2 (Matrix)	104	BPf13 Pan	40		104	Vd Env Lvl
41	BPf3 (Matrix)	105	BPf14 Pan	41		105	Boost
42	BPf4 (Matrix)	106	BPf15 Pan	42		106	
43	BPf5 (Matrix)	107	BPf16 Pan	43		107	
44	BPf6 (Matrix)	108	BPf17 Pan	44		108	LFO2 Phase
45	BPf7 (Matrix)	109	BPf18 Pan	45		109	Lb2 Waveform
46	BPf8 (Matrix)	110	BPf19 Pan	46		110	Lb2 Rate
47	BPf9 (Matrix)	111	BPf20 Pan	47	Vd2 Type	111	Amp Env Attack
48	BPf10 (Matrix)	112	HPF Pan	48	Vd2 Cutoff	112	Amp Env Decay
49	BPf11 (Matrix)	113	LPF Pan	49	Vd2 Resonance	113	Amp Env Sustain
50	BPf12 (Matrix)	114	LPF Freq	50	Vd2 Keyfollow	114	Amp Env Release
51	BPf13 (Matrix)	115	BPf1 Freq	51	Vd2 Env Depth	115	Amp Env TKF
52	BPf14 (Matrix)	116	BPf2 Freq	52	Vd2 CF Mod Source	116	Amp Env Lvl
53	BPf15 (Matrix)	117	BPf3 Freq	53	Vd2 CF Mod Depth	117	Amp Env Lvl
54	BPf16 (Matrix)	118	BPf4 Freq	54	Vd2 Res Mod Source	118	Lb1 Waveform
55	BPf17 (Matrix)	119	Delay Feedback	55	Vd2 Res Mod Depth	119	
56	BPf18 (Matrix)	120	All Notes Off	56		120	
57	BPf19 (Matrix)	121		57		121	LFO1 Phase
58	BPf20 (Matrix)	122		58		122	
59	HPF (Matrix)	123		59		123	
60	Type (VU-Detect)	124		60		124	
61		125		61		125	
62	Hysth	126		62		126	
63	BPf5Freq	127		63		127	
64	Sustain Pedal			64			

# Hardware Warranty Regulations

Use Audio Inc. warrants that the product is in material conformance with the requirements for reasonable enjoyment and operation of a sound synthesizer. However, Use Audio does not warrant the fitness of the product for any specific application and the warranted functionality is limited to features described in this edition of the User Manual. Although the product has been extensively tested with a wide range of computer music products, Use Audio Inc. can not warrant that the product is fully compatible and operational with every 3rd party MIDI device, computer MIDI interface or computer or software configuration.

The limited hardware warranty for this product expressed herein ends after 24 months from the time the product was first sold in an unused condition by an authorized dealer.

If the product is found defective due to material defects within the first six months after purchase, and such defects are not due to non-compliance with operation instructions, Use Audio Inc. shall at its sole discretion and evaluation replace or repair the defective parts or product. Multiple repairs shall be permissible.

Within the time frame of 6 to 24 months after purchase, the customer has to provide proof, that the claimed malfunction or defective part or component is due to an issue which already has been present at the time of purchase. If reasonable proof has been provided in such case, Use Audio Inc. will execute required repair or replacement at no cost to the customer.

Any deficiencies caused by transportation have to be declared within a 14 days period after receipt of goods by written notice to your authorized dealer.

All warranty claims have to be made via your local dealer or distributor and have to contain proof of purchase (supply copy of original invoice) and a detailed description of the issue. Dealers and Distributors are required to comply with the RMA procedure which can be obtained from Use Audio Inc. upon request.



Alterations or modifications to the product which are not explicitly authorized in writing by Use Audio Inc. will immediately render any warranties null and void. Gross non-compliance with the operation and safety instructions may also impede your rights to warranty.

## **EMI / EMC Compliance**

This product is herewith certified to conform to the requirements set forth in the guidelines for electromagnetic acceptability (89/336/EWG) and Class B devices in part 15 of the applicable FCC regulations.

Use Audio Inc  
 3705 BOA Tower Suite 289  
 12 Harcourt Road  
 Central, Hong Kong  
 Tel: +852 3589 3075  
 Fax: +852 2115 9818  
 Email: [info@use-audio.com](mailto:info@use-audio.com)

## **Origin**

This product was manufactured in China and was designed in Germany and India with further contributions from UK, France, Italy, Israel and the USA.

On a side note, we are very proud of our truly global team - people across Christian, Islamic, Hindu, Sikh, Jewish and Buddhist backgrounds have been working together on the Plugiator product as friends. We thank everyone involved for their help to make this product become reality!

# Notes

You may want to take note of your Hardware Serial Number as well as further individual Activation Keys here, for later reference:

**My Hardware Serial Number**

\_\_\_\_\_

**My Activation Keys:**

Minimax	THHA8X2F6RF5
B4000	R5H25X7G8DC6
LightWave	T3XHHHFCD92K
Vocoderizer	_____
Prodyssesy	_____
Pro-12	_____
Fmagia	_____
Drums'n'Bass	_____
	_____
	_____
	_____
	_____

# Notes

# Notes